

Full Contour Zirconia Design Circon[®] art version 3.1.7

DENTSPLY

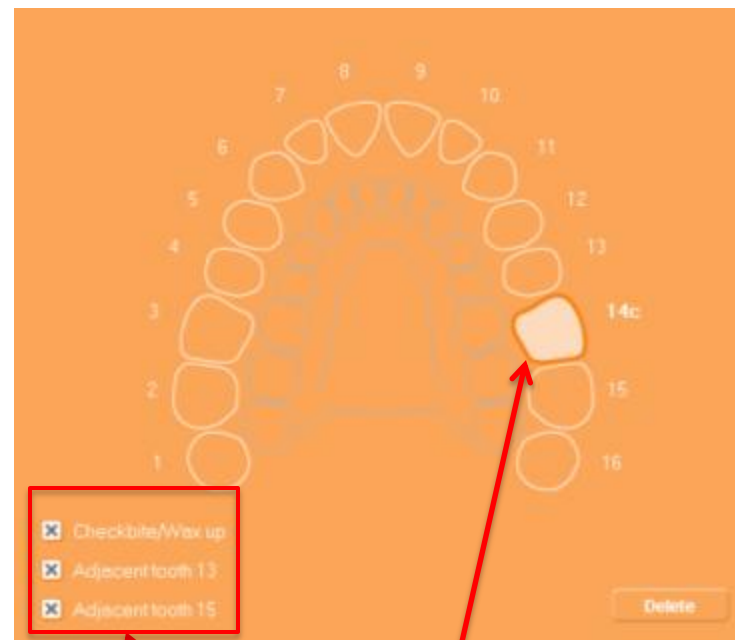
Compartis[®]

Fabricate a Checkbite

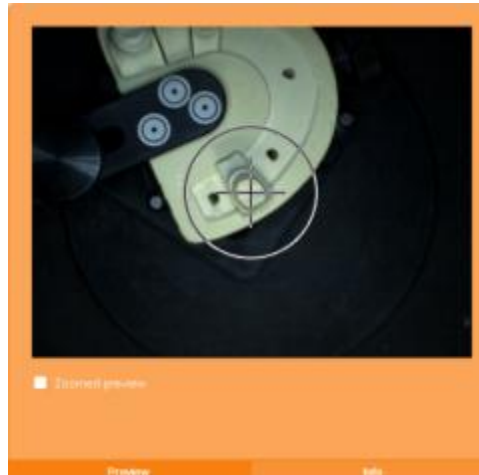
- Mix a putty base with catalyst and make a matrix
- Recommend Zhermack platinum 85 (Scans better than other materials)
- Trim away the excess material



Select ZrO2 ht



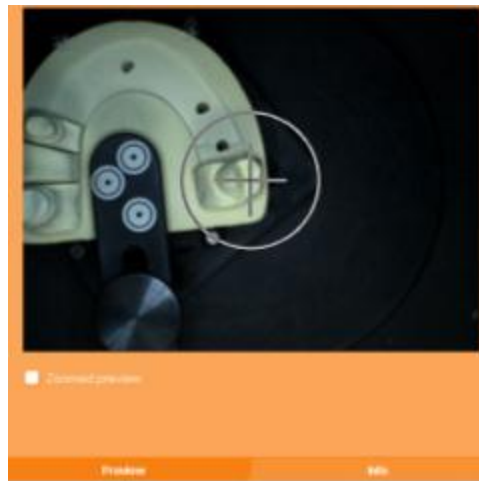
Select the Tooth, Adjacent Teeth, and Checkbite



- Follow the onscreen prompts
- Scan the prepared die

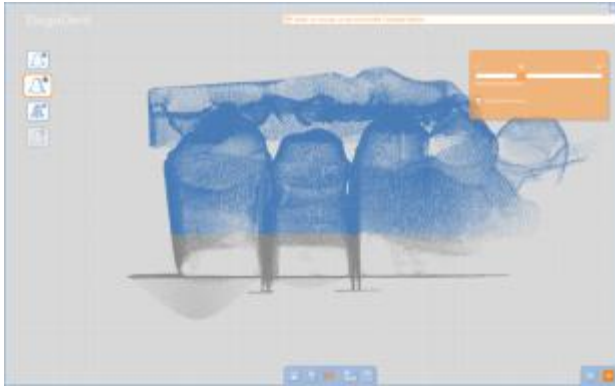


- Scan the adjacent teeth

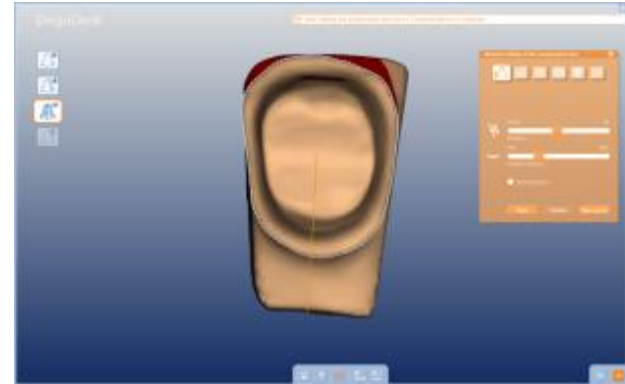


- Scan the check bite

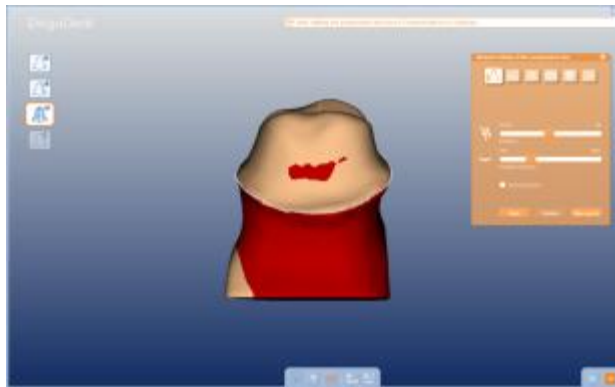




Trim the point cloud



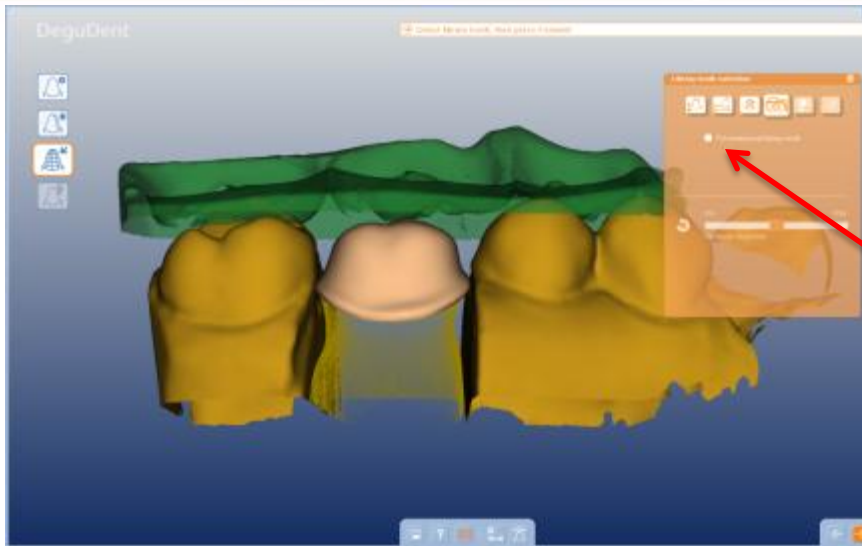
Refine the margin



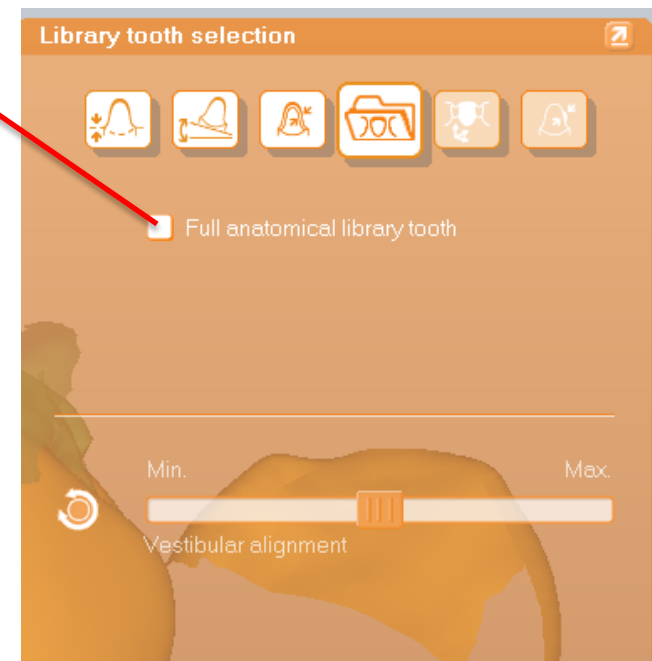
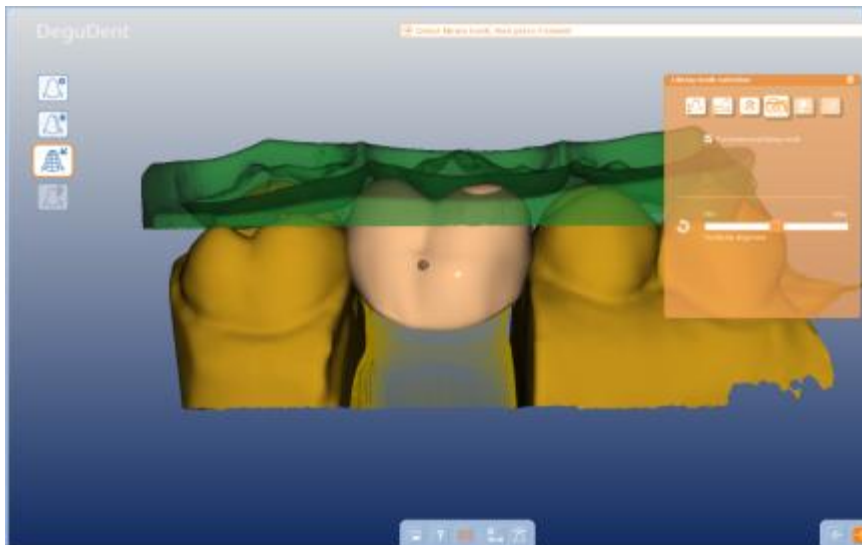
Refine the margin

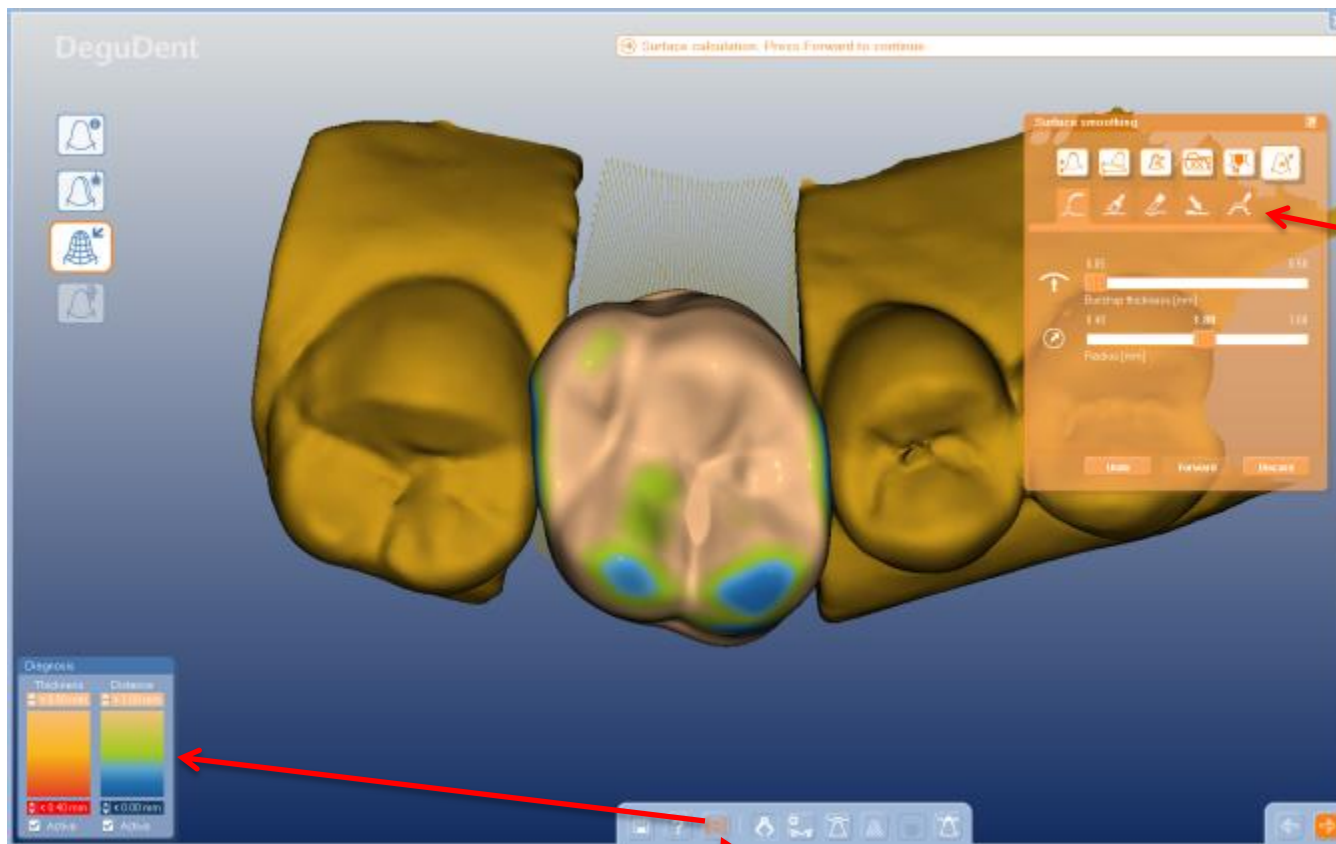


Refine the margin



Select Full anatomical library tooth





Add, remove, smooth and morphing

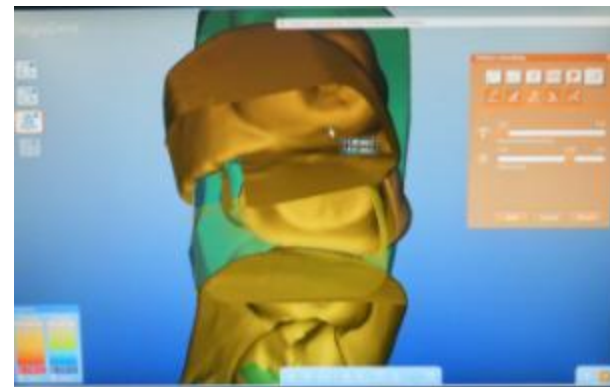
Activates thickness/distance gauge

Use the axis tools to make large adjustments

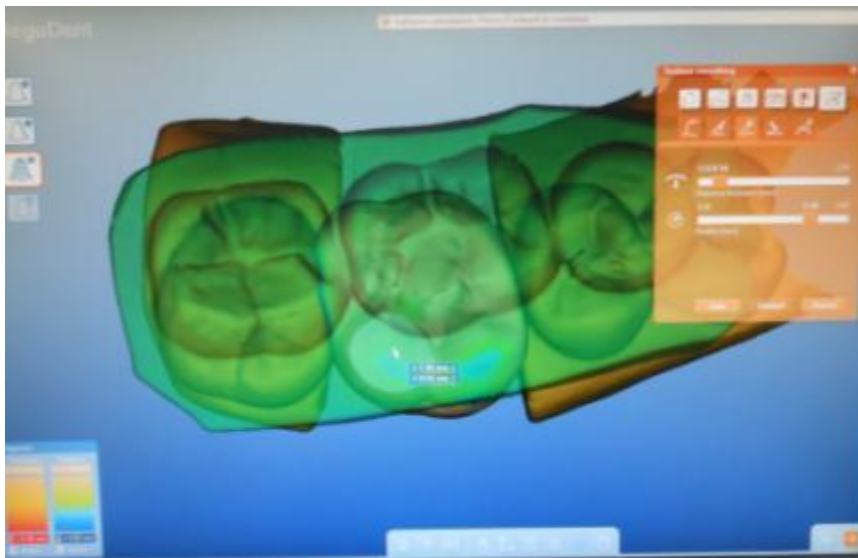
Use the add, remove, smooth, morphing tools to make minor adjustments



Adjust the contact by looking on the inside of the adjacent tooth

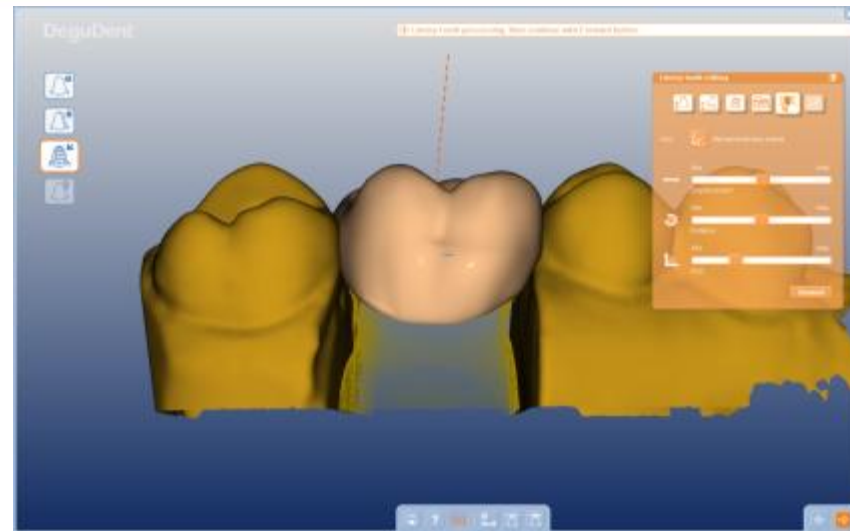


Use the removal tool to adjust the contact



Complete the design

Mill on the Cercon® brain
or brain expert or send to
Compartis® centralized
manufacturing services



Full directions for use available under “Brochures/Directions for Use” on www.degudent.com.

Cercon® art software version 3.1.5 has the same design features as version 3.1.7

